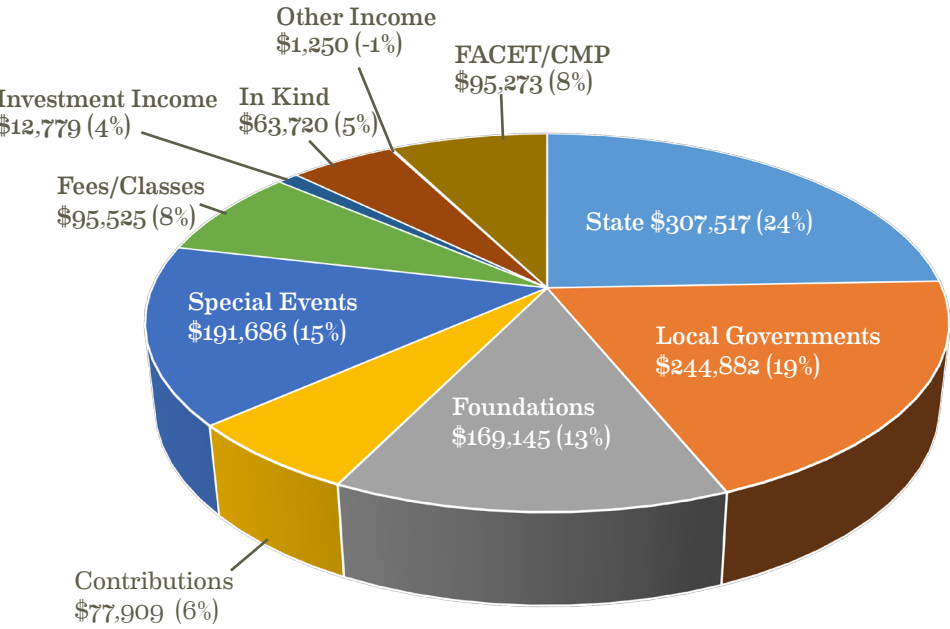
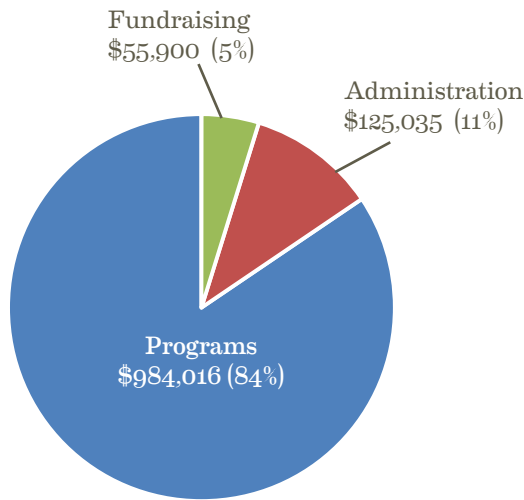


YOUTHZONE  
2014 - 2015 ACTUAL REVENUE  
\$1,259,686



2014 - 2015  
ACTUAL EXPENSES  
\$1,164,951



YOUTHZONE FOUNDATION

How do great organizations, doing great work with exceptional results become sustainable? We believe one way to help YouthZone keep going for the next 40 years is to build our YouthZone Foundation. The funds raised for the YouthZone Foundation are invested with a long-term strategy to help YouthZone provide proven and results-based programs to our communities' youth and families. The fund continues to grow and the Foundation provides quarterly contributions back to YouthZone up to 5% of the total fund. Last year the YouthZone Foundation was able to give over \$45,000 to YouthZone for operating costs. Imagine - if we had \$10 million in this fund, we could provide almost half the annual budget and not have to rely on other sources of funding!



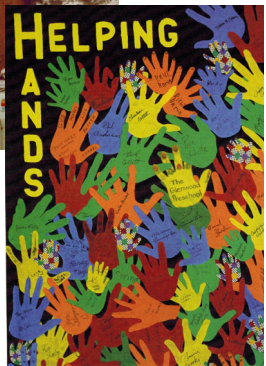
HELPING HANDS

In 1993, the "10,000 Hands" fundraiser began in an effort to expand the YouthZone office in Glenwood Springs. With the generous support of the community, the fundraiser was a success and the expansion at 803 School Street was completed in May of 1994. For 22 years, RE1 School District has generously donated our home.)

As we move towards the next 40 years of helping kids and families, we'll need your helping hands again to provide a new home for YouthZone.



YouthZone Glenwood Springs  
(Prior to the Expansion)



SAVE THE DATES!  
YouthZone Ascent - October 8  
40th Year Appreciation Celebration - November 10

PROGRAMS & SERVICES

YouthZone serves youth from ages 6 to 18. We see each young person as a multifaceted human being with many needs, desires, interests, and motivations. To meet their diverse needs, YouthZone provides each youth with an individualized, comprehensive program.

PREVENTION PROGRAMS

- Pals & Pals Plus Mentoring\*
- Girls' Circle
- Boys' Council
- Trained Involved Teens
- Assisting Non-profits (TITAN's)

PARENT PROGRAMS

- Parenting Through Divorce
- Parent Consultations
- Parent One-on-One Education
- Parent Classes and Workshops

INTERVENTION PROGRAMS

- Counseling
- Case Management
- Family Mediation
- Juvenile Court Services
- Useful Public Service
- Restorative Justice
- Substance Abuse Education & Intervention

\*The YouthZone Pals Plus Mentoring Program is an extension of the existing Pals Mentoring Program, and is being piloted during 2015-2016 with the goal of expanding it during the next 3 to 5 years. Pals Plus involves the use of highly trained, professional mentors to work with higher risk youth in Rifle Middle School.



2015  
The 25th and Final Year of  
Kiss 'n Squeal!  
Thank you to our many candidates  
throughout the years!

BOARD OF DIRECTORS

- Dave Scruby, *Chair*
- Jim O'Donnell, *Vice Chair*
- Ted Edmonds, *Secretary/Treasurer*
- Tim Braun
- Tim Burns
- Lindsey Busk
- Alicia Crandell
- Mely Irigoyen
- Tim Kelly
- Steve Nilsson
- Martha Robinson
- Mike West

YOUTHZONE FOUNDATION

BOARD OF DIRECTORS

- Dan McCaslin, *Vice President*
- Marci Pattillo, *Vice President*
- Lori Mueller, *Secretary*
- Barbara Clarke
- Corinne Diemoz-DeRaddo
- Hollis Kelley
- John Krol
- Susie Richardson
- Robin Tolan
- Rosario Young

STAFF

- Haleigh Armstrong
- Sara Barrett
- Kerri Cheney
- Glenda Cortez
- BrandyClouse
- Patti Cummings
- Cameron Daniel
- Tyler Desiderio
- Lisa Detweiler
- Courtney Dunn
- Linda Green
- Jennifer Keener
- Cinthia Lopez
- Fabian Lujan
- Samantha Lovas
- Nancy MacGregor
- Patty Schaffner
- Lisa Sobke
- Robin Tolan
- Lori Mueller, *Executive Director*



YouthZone  
803 School Street  
Glenwood Springs, CO 81601  
970.945.9300  
www.YouthZone.com

Visit us on Facebook



PREVENTION



PARENTING



INTERVENTION



40th  
1976-2016 ANNIVERSARY

YouthZone  
ANNUAL REPORT

Transforming the Lives of Kids and Families Since 1976



FROM THE DIRECTOR

To sustain longevity, you have to evolve.  
— Aries Spears

In 1976, in Rifle, Colorado, Charlene and Bud Collett, and Marilyn Hall founded Let's Work it Out (YouthZone) in Rifle, Colorado.

Starting with a small staff of two employees and a minimal budget of \$25,000, YouthZone now employs a staff of nearly 20 and operates an annual budget of well over \$1 million. It continues to amaze me how far YouthZone has come and how we have evolved as an organization over four decades. While the statistics may have changed right along with styles and technology, what has remained the same is YouthZone's dedication to helping youth in western Colorado.

The success of YouthZone's longevity, in my opinion, can be attributed to the amazing people who have come to support the organization and hold it dear in their hearts. Our amazing staff and their passion for helping kids prosper, along with their willingness to grow and develop as professionals, is the backbone of YouthZone. The ever-growing number of volunteers who give so many hours of their

time to mentor a young person through our Pals Mentoring Program or who help the organization in varying other capacities are vital to our sustainability. The donors and fearless fundraisers who continue to financially support YouthZone allow the rest of our staff to focus on helping kids.

Longevity in an organization is truly dependent upon the evolution of programming, knowledge, staffing, and financial resources. All of us at YouthZone are truly thankful for the support you have continued to provide us through the past 40 years, and we look forward to continuing to fulfill our mission of "providing opportunities for youth to be responsible, contributing members of society and work with their families and the community toward this end."



You make the difference,

*Lori Mueller*

Lori Mueller  
Executive Director  
YouthZone

COMMUNITY COLLABORATION

Collaboration with local and state partners is an integral part of YouthZone operations.  
In 2015, YouthZone staff collaborated with a variety of entities.

All Municipal, County and District Juvenile Courts from Aspen to Parachute

Aspen Community Foundation  
Cradle to Career Initiative

Basalt Middle School  
Weekly Resource Meetings

Carbondale Rotary

Coalition for Families:  
A Collaborative Management Program in  
Garfield and Pitkin Counties

Colorado Mentoring Partnership Task Force

Eagle and Pitkin Counties  
Child Protection Teams

Garfield & Pitkin County Trauma Task Force

Garfield and Pitkin Counties Family and  
Community Engagement Teams (FACETs)

Garfield County Human Service Commission

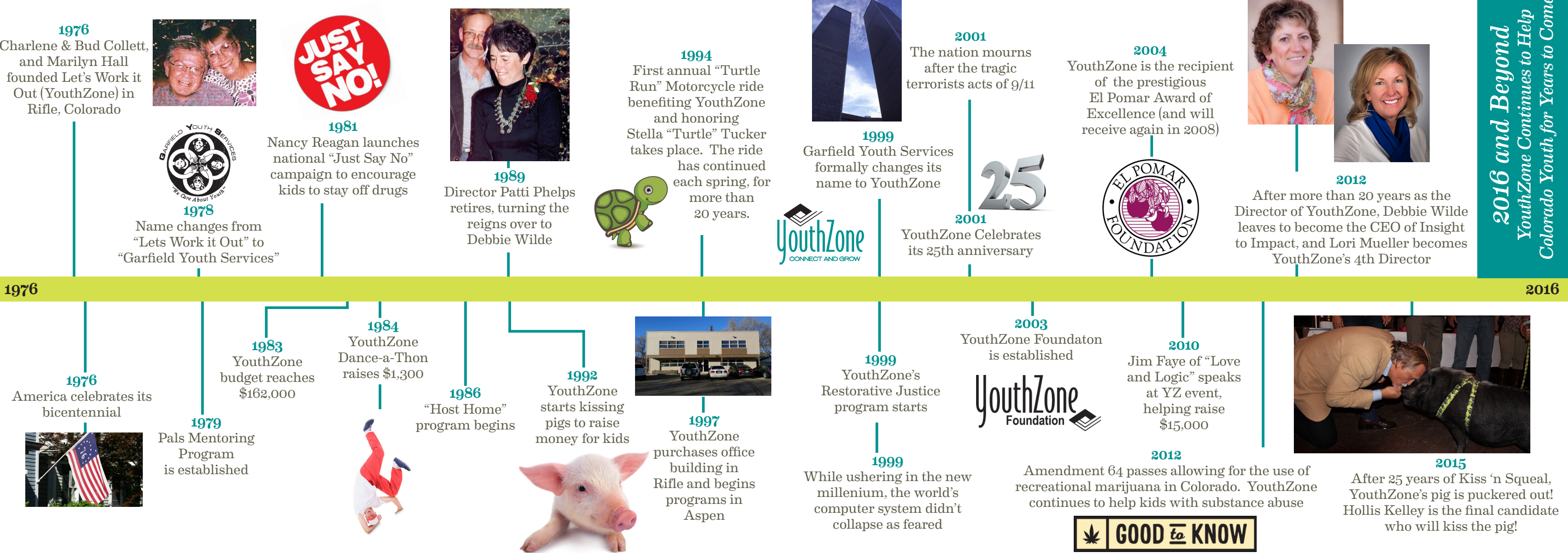
Glenwood Chamber  
Business Women's Network

Pitkin County Human Services Team

Rifle Chamber Women in Business

School Resource Officer Meetings

40 Years of Transforming the Lives of Kids and Families



YOUTHZONE BY THE NUMBERS

860 clients plus 1,321 family members served in 2015  
2,380 hours that Teen and Adult Pals Mentors volunteered with their Jr. Pals  
10% Pitkin County  
4% in Rio Blanco and West Eagle County  
86% Garfield County: Carbondale to Parachute  
90% Success Rate for youth not to repeat another offense while at YouthZone  
42 Restorative Justice sessions took place involving more than 200 volunteers



WHY KIDS ARE COMING TO YOUTHZONE?

- 33% YouthZone clients referred by schools, parents, counselors, other youth organizations, or self-referrals  
67% of youth are referred to YouthZone for the following charges:
- Substance related charge 40%
  - Danger to others 22%
  - YouthZone services such as group and counseling 16%
  - Petty Theft 16%
  - Crimes Involving Property 6%

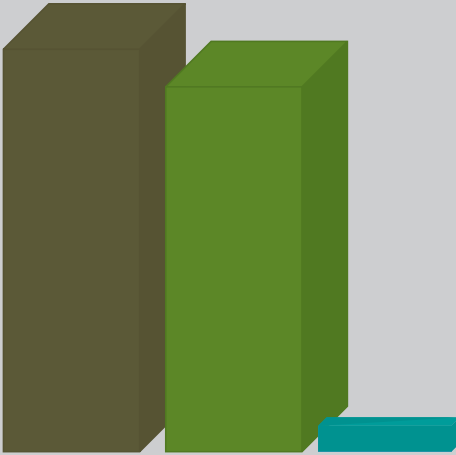


YOUTHZONE CLIENTS

- 51% boys
- 31% girls
- 18% adults
- 47% Hispanic
- 50% Caucasian



COST OF SERVICES  
6 MONTHS



\*National or state-run facility

RECIDIVISM RATE

